

Dollhouse & Miniatures

SUPPLEMENT 2026



UPDATED
JUNE 2026

MANY
NEW
ITEMS!

INCLUDING
THE FULL
Jackson's Miniatures
RANGE



SEE OUR CATALOGUE FOR MORE!

The Dolls House Emporium dollshouses



Cumberland Castle pictured below and left with Cumberland Castle East Wing, dolls and accessories not included.



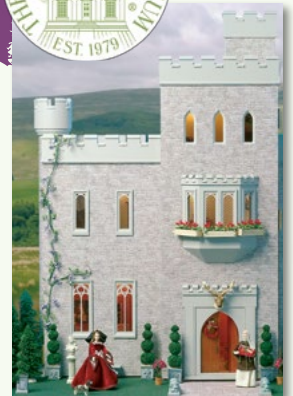
Cumberland Castle

See our main catalogue for more dollshouses

Unpainted: 1619

MDF Construction
Approx sizes:
38" (96.6cm) High
26" (66cm) Wide
16" (41.2cm) Deep

Cumberland Castle is suitable for beginners as well as advanced builders, this evocative house with optional additional East Wing, can be turned into anything from a medieval haunt to a modern-day luxury hotel. Features include castellated walls, interior detailing and authentic architecture. Historic manor or country retreat? The styling choice is yours! Five rooms over three floors, plus two roof terraces make this a versatile addition to your collection. Don't forget the tower room at the top - what secret could it hide?



Cumberland Castle East Wing

Cumberland Castle East Wing, is a fantastic addition to the Cumberland Castle building. It offers two extra rooms for decoration and styling, making Cumberland Castle into a truly expansive dollhouse.

Unpainted: 1639



MDF Construction
Approx sizes:
28" (72.2cm) High
14" (36.1cm) Wide
12" (30cm) Deep



Cumberland Castle

Cumberland Castle East Wing

Streets Ahead dollshouses

All houses come flatpacked with ready made components.
Screw together simply and quickly.



DH542 - Middle Store

This Middle Store room box can be used as the basis of a simple shop scene, or be added to more DH542 kits or DH543 kits to build a row of shops or a larger building.

Unpainted: DH542



DH542

DH543 - Corner Store

This wonderful addition to our range in the form of a Corner Store is incredibly versatile. It can be used as a standalone room box, or coupled with additional DH543 kits or DH542 kits to build a larger property.

Unpainted: DH543



DH543

DH542 and DH543

Here are examples of configuration of DH542 and DH543 roomboxes to create something new.



DH543 x 2



DH542 plus DH543



DH542 x 2 plus DH543



Streets Ahead Dollhouse

Specialist Worldwide Supplier
of Full Miniatures Range for Every Dollhouse



*Springwood
Cottage 1749
with a
Classical
Basement 1689*



Supplement
© Streets Ahead 2026

PLEASE NOTE:
Items may vary from the catalogue illustrations.

WARNING:
These are collectors items and unless indicated not CE marked and should not be sold as toys.

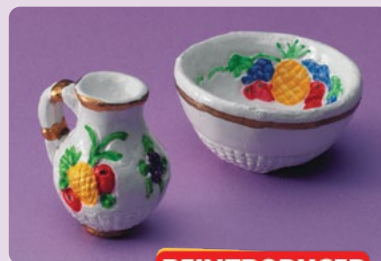


D272



COMING SOON

D1134



D1791

REINTRODUCED



REINTRODUCED

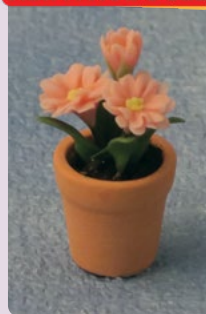
D2217 pk2



REINTRODUCED

D86157

REINTRODUCED



D87143



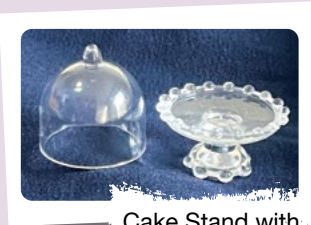
NEW

D2200A
29mm Gold Rim pk12



D2404A
Ornate Mirror
(Frame Only)

NEW

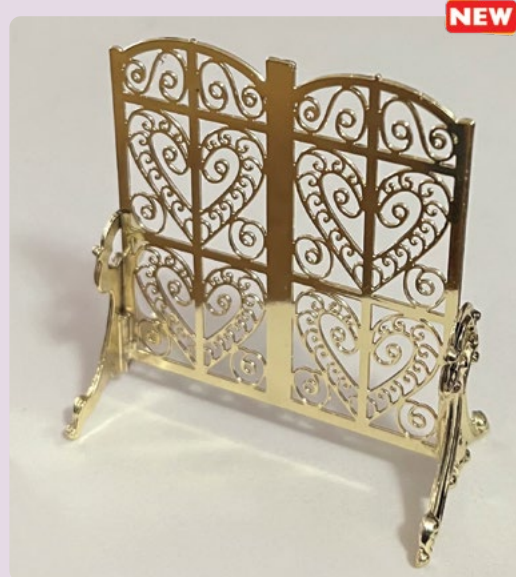


Cake Stand with
removeable cover



D2541A

NEW



NEW

D2664
Ornate Gold Screen



NEW

D2665
Brass
Compass



NEW

D2667
White Enamel
Saucers pk6

See our main catalogue
for our range of accessories



The hobby that grows with you.

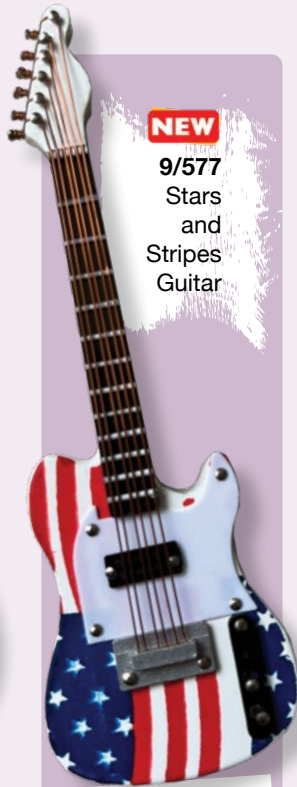
Music Room



NEW

9/576
Union
Jack
Guitar

Comes complete
with a hard case



NEW

9/577
Stars
and
Stripes
Guitar

Comes complete
with a hard case



NEW

9/578
Pink
Electric
Guitar

Comes complete
with a hard case



NEW

9/579
Red
Flames
Bass
Guitar

Comes complete
with a hard case



See our main catalogue
for our range of accessories



Pets



REINTRODUCED

8/020
Dogs 4 Assorted

Dining Room

NEW COLOUR



9320

Living Room



NEW COLOUR

DF77611

Electrics



UPDATED

7410

12 Volt System



UPDATED

DE011A

12 Volt System

NEW



DE391
White Light Christmas Tree
(height: 17cm)

NEW



DE392
Colour Light Christmas Tree
(height: 17cm)

12 Volt System



DE080
Brass Picture Lamp

UPDATED



UPDATED

DE089

12 Volt System



UPDATED

12 Volt System

DE090



DE390
1.5 Volt
Battery
pk10

NEW

For use with
DE391-DE394



DE393
20 White Light String,
with On/Flash Settings

NEW



DE394
20 Colour Light String,
with On/Flash Settings

NEW

D.I.Y.



DIY299
Pair of staircases
with 13 steps and
left hand rails

UPDATED



Solid
wood
with
bevelled
steps



Peg
for easy
fitting
into your
dollhouse



DIY299R
Pair of staircases
with 13 steps and
right hand rails

UPDATED



REINTRODUCED

DIY314
Crazy Paving Paper
360mm x 760mm

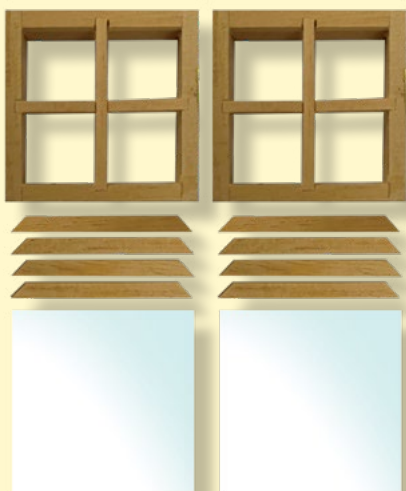


NEW

DIY824
Heat Shrink Electrical Tubing
(1 metre length)



See our main
catalogue
for our full range
of DIY items



DIY574
Small windows with
perspex panes
35mm x 35mm pk 2

REINTRODUCED



Arts and Crafts



DF140
NEW COLOUR

Dollshouses



Our exclusive selection of The Dollhouse Emporium and Streets Ahead Dollhouse dollshouses come in two construction styles. For more information about our full range, see our main catalogue, pages 10 - 31.



Below is our one of our more modern designs.

Malibu Beach House

Bringing a little sunshine to dolls' house collectors around the globe, the exotic Malibu Beach House is a firm favourite with collectors and professional stylists alike. For lovers of modern living, its Art Deco lines make it particularly pleasing to the eye and it is easily turned into a wonderful home with six rooms across three floors. It can easily be adapted for non-residential purposes; examples include an art gallery, department store or a Miami Beach Hotel! The addition of the roof-top sun lounge means you can have your very own spa with Jacuzzi - what bliss!

Unpainted Kit: 0909

MDF Construction
Approx sizes:
34" (86.6cm) High
38" (96.3cm) Wide
19" (48.1cm) Deep



Embossed Foamboard

NEW



Designed & made in the UK

See our main catalogue for the rest of our Embossed Foamboard



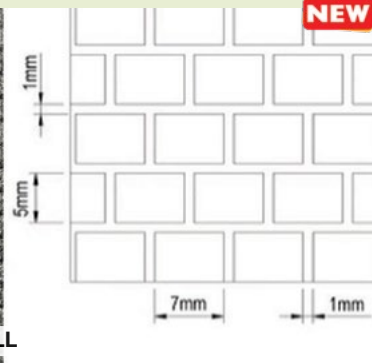
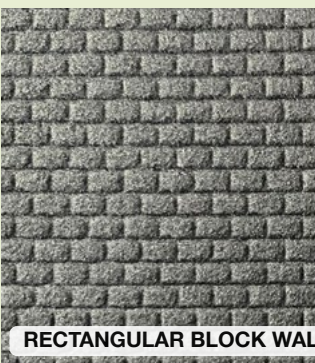
Streets Ahead have added more items to the range of embossed XPS* foam sheet boards for dollhouses, model making, terrain building and scale dioramas. Add to dolls house kits or build stone effect flooring and roof tiles for your miniature project.

This range is produced in 6mm thick XPS foam boards in 200mm x 400mm boards in 1/12 scale and many also available in 1/24 "Small" scale. Ready to glue and paint with any non-solvent based art supplies.

Some designs also available in double sided embossed 10mm XPS board to build 1/12 scale double sided brick and stone walls.

This range is designed and made in the UK for exclusive distribution to the miniatures trade by Streets Ahead.

*XPS = extruded polystyrene



NEW

RECTANGULAR BLOCK WALL

NM026 Small scale / NM026B Small scale double sided



NEW

RECTANGULAR BLOCK WALL

NM027 Medium scale / NM027B Medium scale double sided



NEW

RECTANGULAR BLOCK WALL

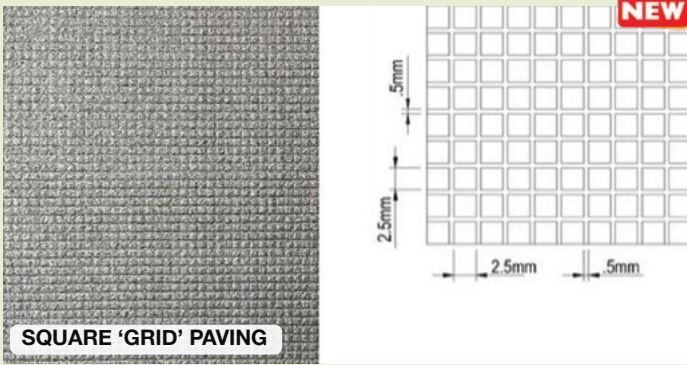
NM028 Large scale / NM028B Large scale double sided



NEW

RECTANGULAR BLOCK WALL

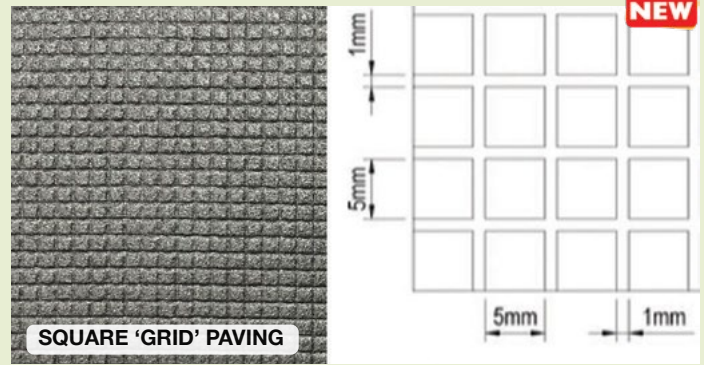
NM029 X-Large scale / NM029B X-Large scale double sided



NEW

SQUARE 'GRID' PAVING

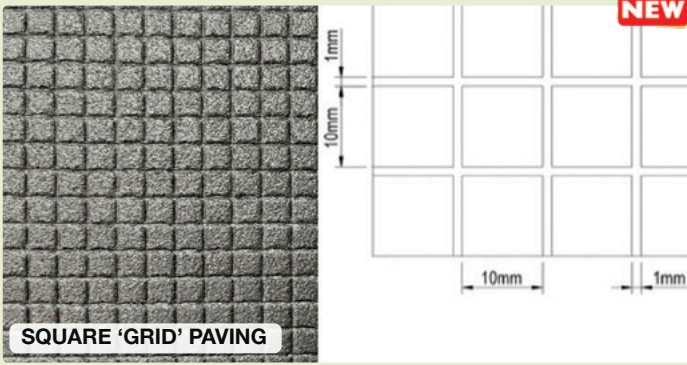
NM030 Small scale



NEW

SQUARE 'GRID' PAVING

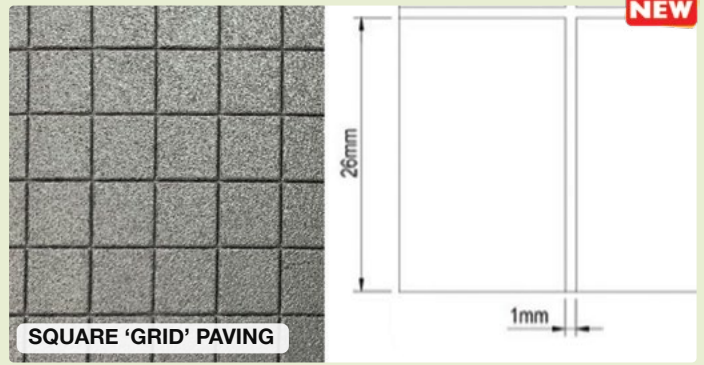
NM031 Medium scale



NEW

SQUARE 'GRID' PAVING

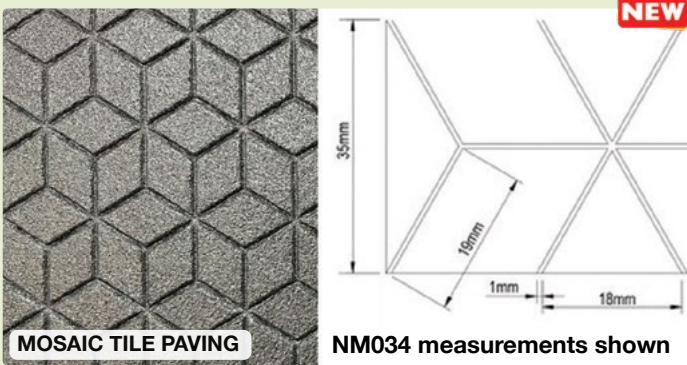
NM032 Large scale



NEW

SQUARE 'GRID' PAVING

NM033 X-Large scale

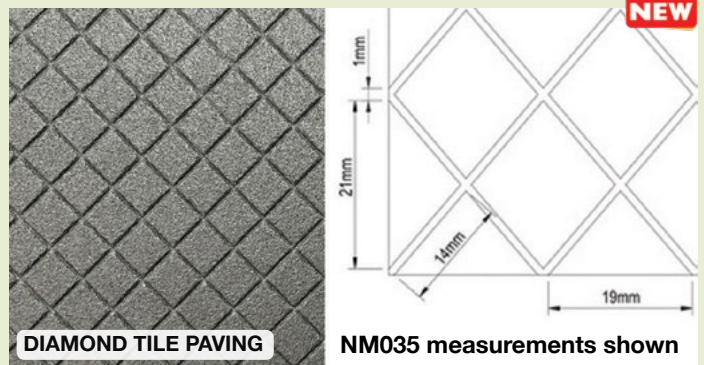


NEW

MOSAIC TILE PAVING

NM034 measurements shown

NM034 / NM034A Small scale



NEW

DIAMOND TILE PAVING

NM035 measurements shown

NM035 / NM035A Small scale



NEW

WOOD SHINGLE ROOF TILES

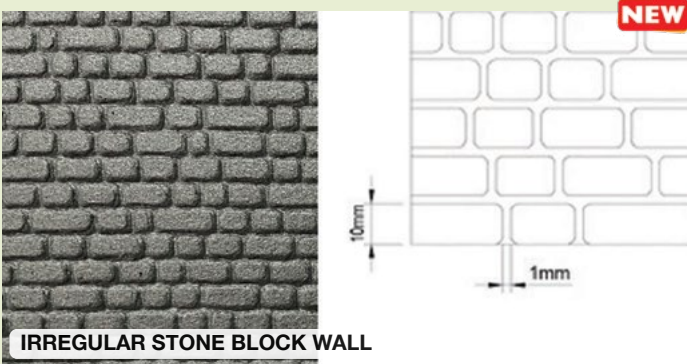
NM036



NEW

DIAMOND SLATE ROOF TILES

NM037



NEW

IRREGULAR STONE BLOCK WALL

NM038 / NM038B Double sided

See our main catalogue for the rest of our Embossed Foamboard



A3 Craft Card



This beautiful range of plain colours of perfect weight, 160gsm, A3 Craft Card offers a perfect finish for statement walls, splashbacks or wallpapering an alcove. See our full range of wallpapers in our catalogue for lots more wallpaper options.

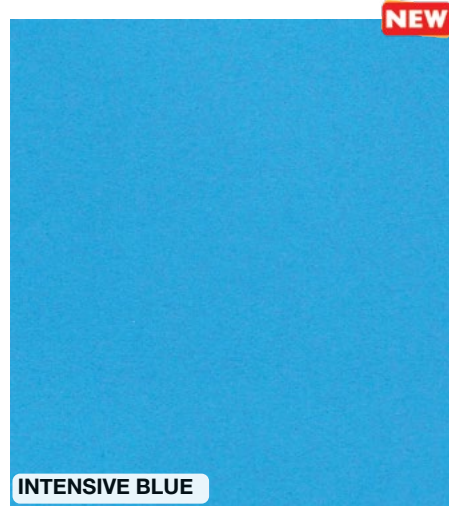


Made in Europe



MEDIUM BLUE

DIY825



INTENSIVE BLUE

DIY826



PALE YELLOW

DIY827



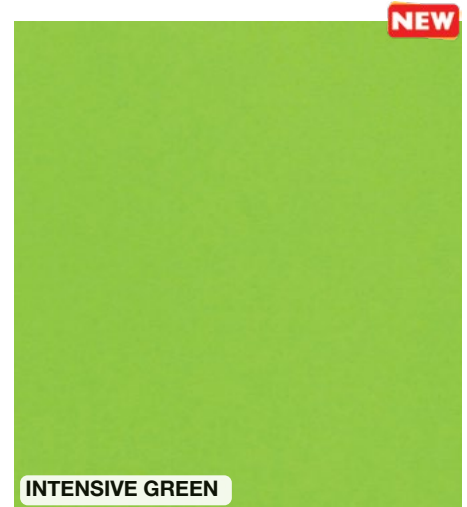
INTENSIVE YELLOW

DIY828



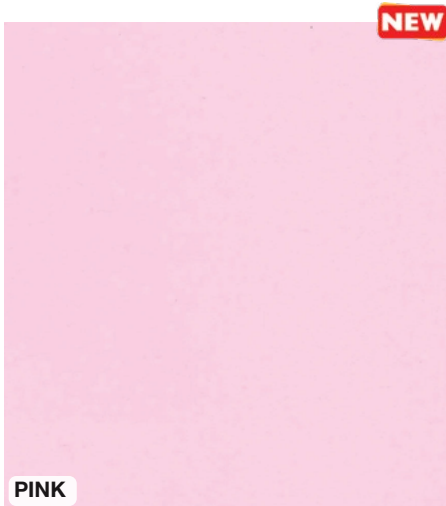
NATURAL GREEN

DIY829



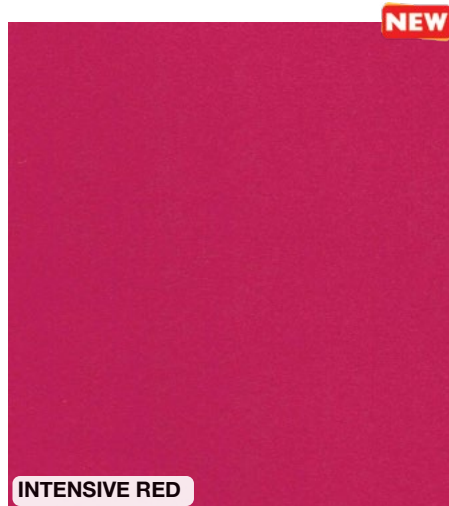
INTENSIVE GREEN

DIY830



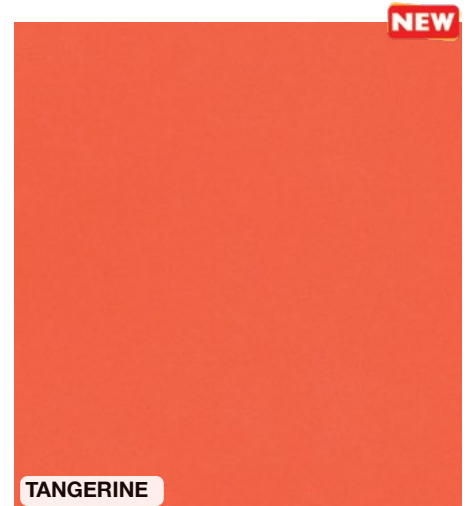
PINK

DIY831



INTENSIVE RED

DIY832



TANGERINE

DIY833

A3 Paper

These two papers have been carefully selected to complement our current range of wallpapers. Full range is displayed in our catalogue.



Designed & made in the UK



NEW

MARBLE TILE

DIY823



REINTRODUCED

VICTORIAN FLOOR

WP1001 A3 Gloss Paper



NEW

JMAT10



NEW

JMAT12

Landscape Mats

48" x 24"

1200 x 600mm

Javis Landscape Mats now available in new colours, perfect for your miniature outdoor space.



See our main catalogue to find our full range of everything for your Dollhouse and Miniatures hobby



Wudcare

New to the Streets Ahead range are these adhesives from Wudcare. Perfect for use with miniatures and especially great for larger projects.



R012

NEW

Wudcare 5 Minute Super Fast Woodworking Adhesive 250ml

A strong PVA glue that has been extensively tested to be weatherproof and water resistant.



R013

NEW

Wudcare Super Glue Trade Size 20g

A fast bonding, high strength, instant adhesive that will bond to virtually any material.

A3 Embossed Card

 **Designed & made in the UK**

This great new range of A3 Embossed Card is perfect for creating realistic external driveways, walls and roofs.



DIY819A



DIY819B



DIY819C



DIY821A



DIY821B



Our embossed papers bring another dimension to traditional dollshouse decorating.

See our full range of wallpapers in our full catalogue for lots more options.



A3 Card



Designed & made in the UK

This gorgeous new range of A3 Card is perfect for the larger projects including large rooms, driveways, external walls or roofs.



RED BRICK HERRINGBONE

DIY818A



WEATHERED BRICK HERRINGBONE

DIY818B



YELLOW BRICK HERRINGBONE

DIY818C



OLD DARK ROOF SLATES

DIY820A



OLD LIGHT ROOF SLATES

DIY820B



TRADITIONAL LIBRARY SHELVES

DIY822



See our main catalogue to find our full range of everything for your Dollhouse and Miniatures hobby





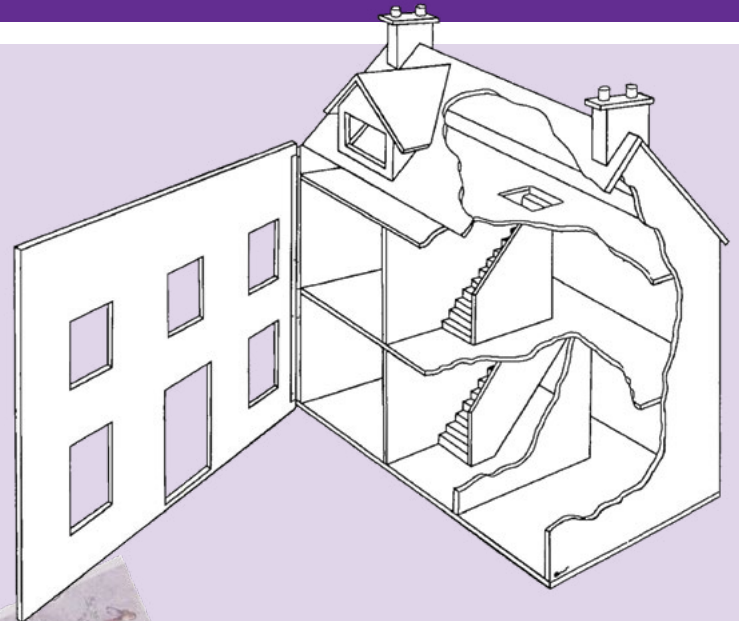
Jackson's Miniatures

Streets Ahead Dollhouse have taken over the WORLDWIDE manufacture and wholesale supply of all Jackson's Miniatures dollhouse products

We at Streets Ahead Dollhouse, are pleased to be able to exclusively offer the full range of Jackson's Miniatures products.

This includes; House and Shop Plans, Fine Detail Plastic Doors and Windows, a Pediment, Railings, Quoins, Wallpapers, Floor Papers, External Roof and Brick Papers, and Borders. There are designs available for both 1/12th scale and 1/24th scale.

Many out of stock Jackson's Miniatures wallpapers will be back in stock for 2026!



Jackson's Miniatures

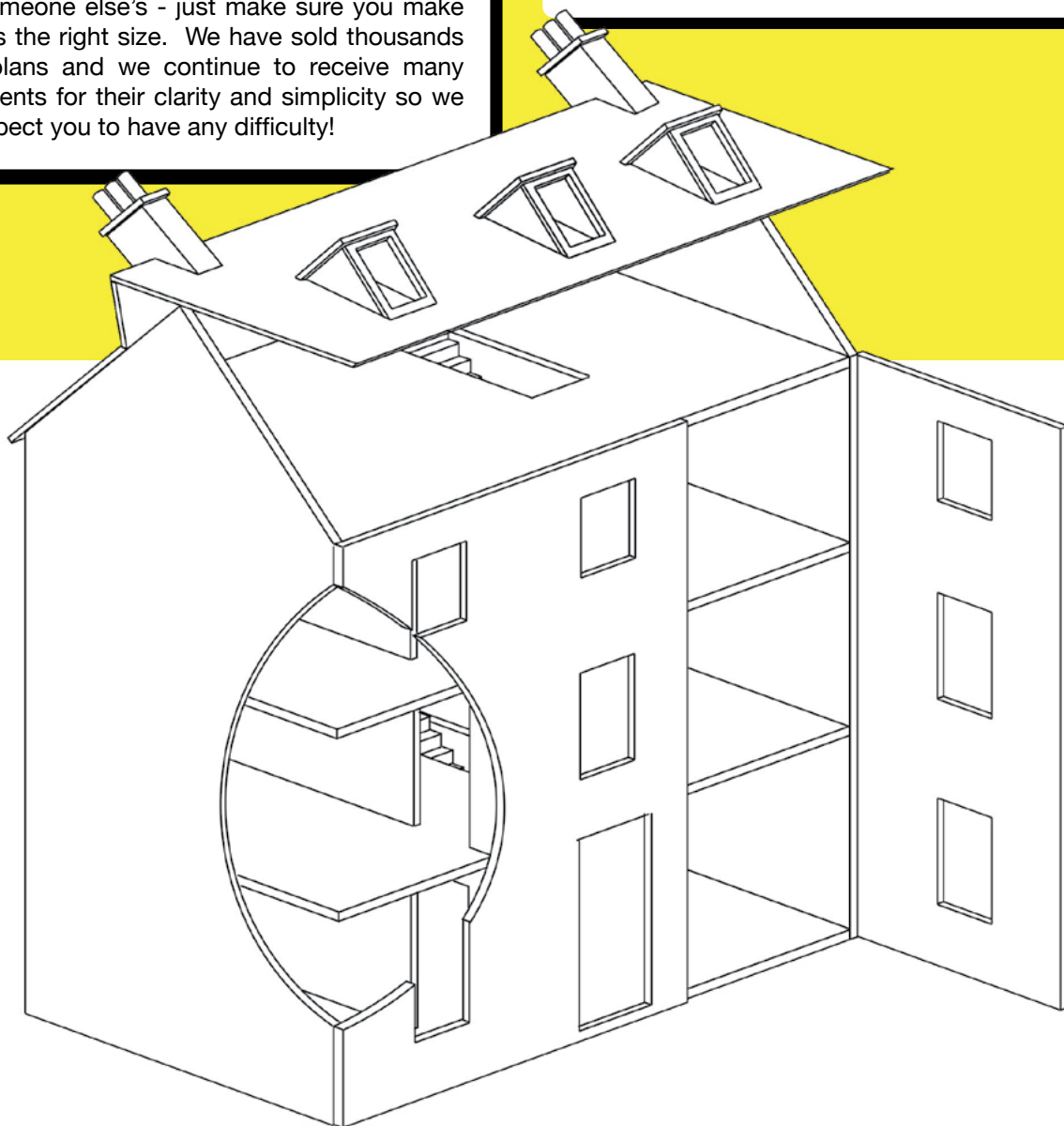
House *AND* Shop Plans

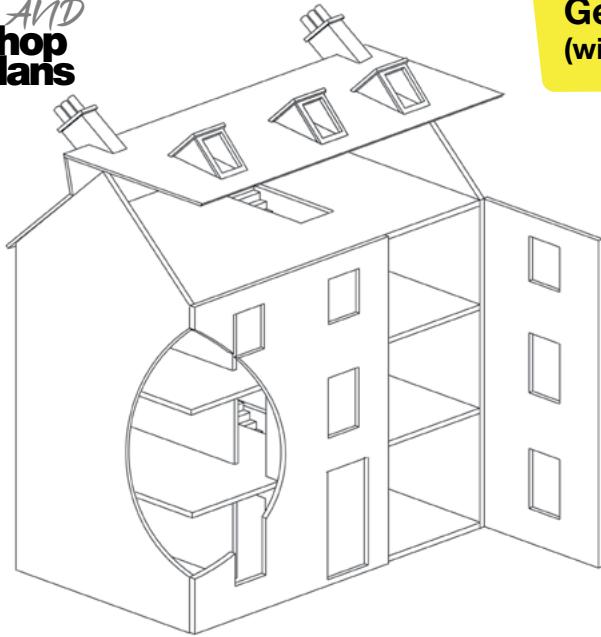


These plans are produced in imperial (English) measurements. A metric conversion sheet is available on request.

Our plans are based on using Jackson's Miniatures doors and windows but there is no restriction on using someone else's - just make sure you make the holes the right size. We have sold thousands of our plans and we continue to receive many compliments for their clarity and simplicity so we don't expect you to have any difficulty!

These plans are printed across multiple pages, A3 sized, to give clear and concise instructions enabling you to create your very own dollshouse. There are 12 designs available, including 1/12th scale and 1/24th scale.





**Georgian Mansion
(with hinged roof)**

12th
scale

This is our biggest house plan and our most popular. The latest version of the plan offers a choice of either pointed roof or flat roof dormers (as shown in the picture).

The finished house measures 30" wide by 18 1/2" deep and 36 1/4" high (76cm by 47cm by 92cm).

The 6 individual rooms measure approximately 11" wide by 17" deep and 9" high.

(The second floor - 3rd storey - has a lower ceiling height of 7 3/4")



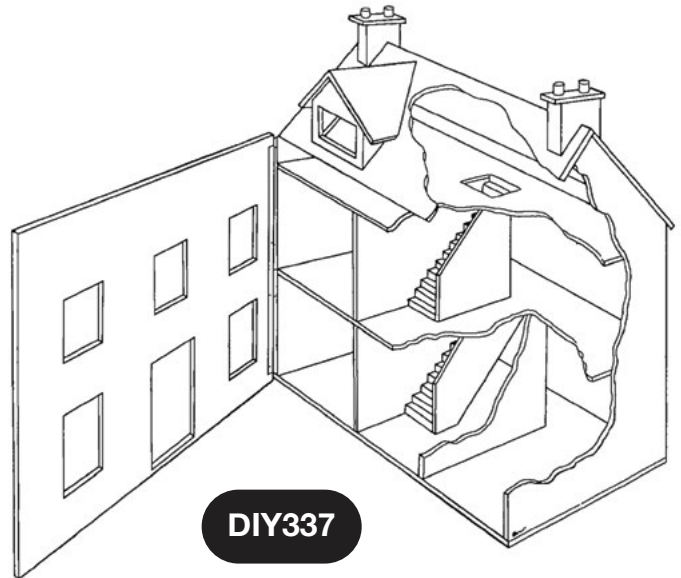
DIY336

**Georgian Dormer Cottage
(with lift off roof)**

12th
scale

This house is similar to the Georgian Cottage, but with an additional floor and two dormer windows. The roof is designed to lift off so that little hands can't be trapped by a hinged roof slamming shut.

The finished cottage measures 21" wide by 13" deep and 25" high (53cm by 33cm by 64cm).



DIY337

**Victorian Mansion
(with hinged roof)**

12th
scale

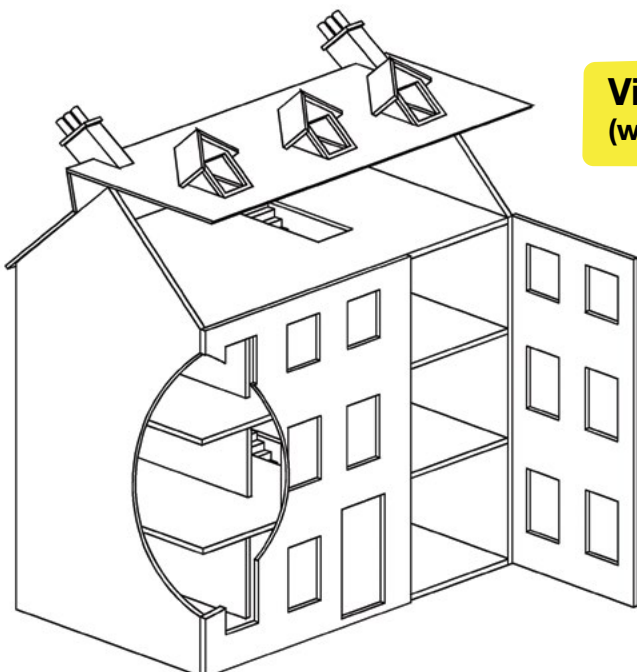
We have altered the appearance of our Victorian mansion to make it more distinguishable from our Georgian mansion.

The finished house measures 30" wide by 18" deep and 40" high (76cm by 46cm by 102cm).

The 6 individual rooms measure approximately 11" wide by 17" deep and 9" high. (The second floor - 3rd storey - has a lower ceiling height of 7 3/4")

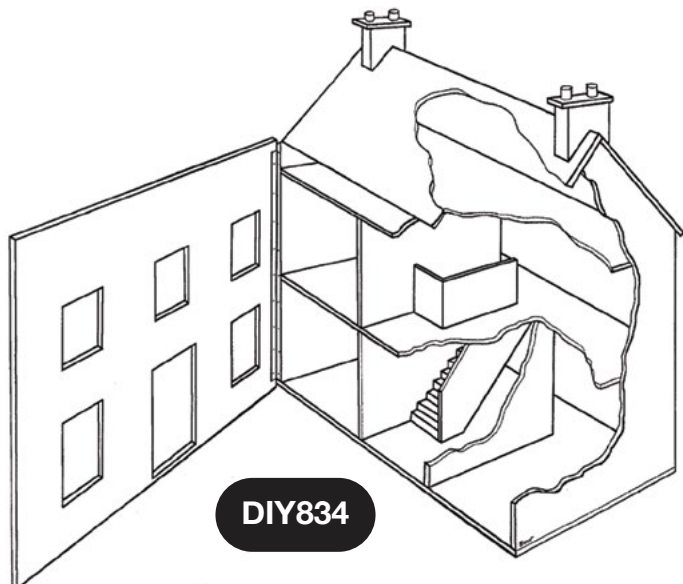


DIY817



Georgian Cottage Plan

12th
scale



DIY834

This is an easy plan to follow and ideal for the beginner or for someone making a child's doll house.

The finished cottage measures 21" wide by 13" deep and 23" high (53cm by 33cm by 58cm).



Georgian Town House Plan

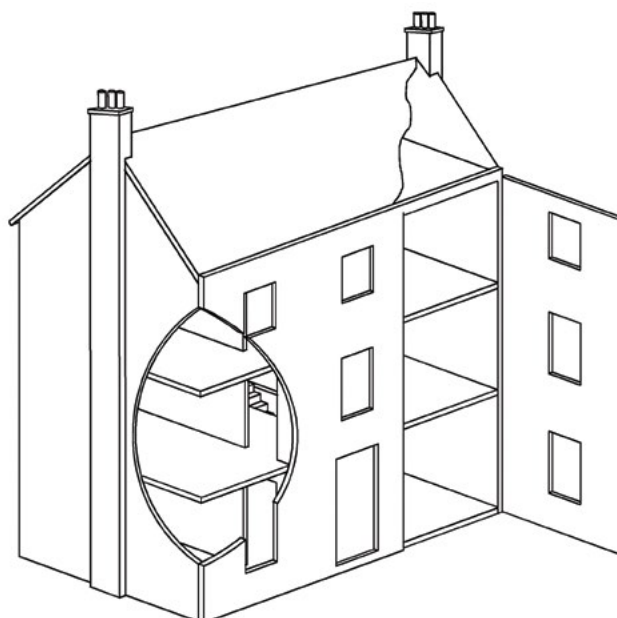
12th
scale



This plan is suitable for the more ambitious do-it-yourselfer, but it is still straightforward to make.

The finished house measures 28 3/4" wide by 17 1/2" deep and 36 1/2" high (73cm by 44cm by 93cm).

DIY835



**Double Fronted Georgian Shop
(with hinged roof)**

12th
scale



This is our biggest plan and features two shop fronts with authentic bow windows!

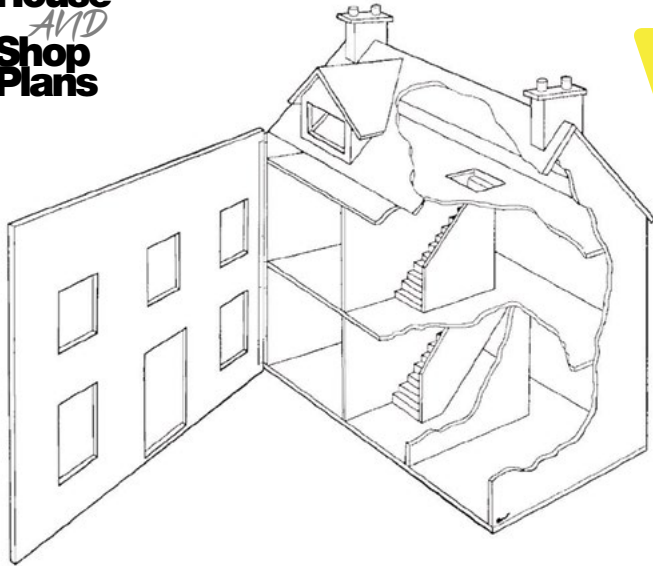
You can choose between four different arrangements for the front doors and windows.

DIY836



The more ambitious do-it-yourselfer can customize the shops using our plan as your starting point.

The finished shops measure 30" wide by 15" deep and 29 1/2" high (76cm by 38cm by 75cm).



**Victorian Dormer Cottage
(with lift off roof)**

12th
scale

This is based on our popular Georgian Dormer Cottage house plan.

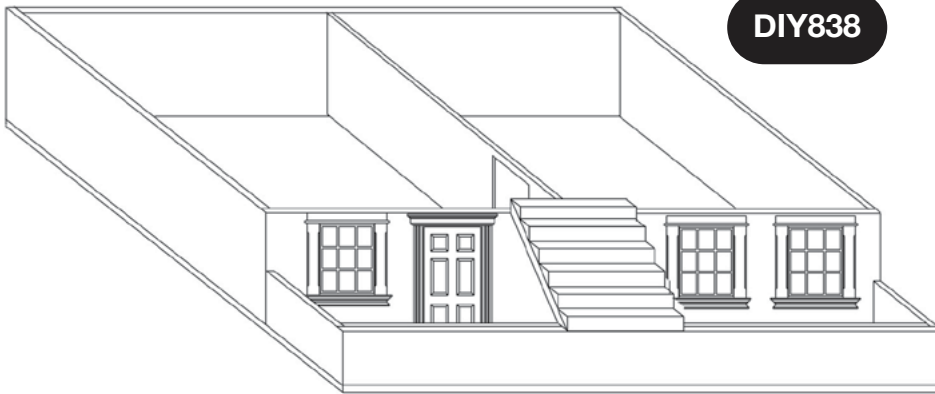
The finished house measures 21" wide by 13" deep and 25" high (53cm by 33cm by 63.5cm).

DIY837



Georgian / Victorian Mansion Basement

12th
scale



DIY838

A two room basement to complement our popular Georgian Mansion. The front can be moved away to reveal two large rooms measuring 14 1/2" wide by 18 1/4" deep and 7 7/8" high

The complete basement measures 29 1/4" wide by 18" deep and 9" high (74cm by 46cm by 23cm).

Illustration shows basement with top removed and Georgian door and windows fitted.

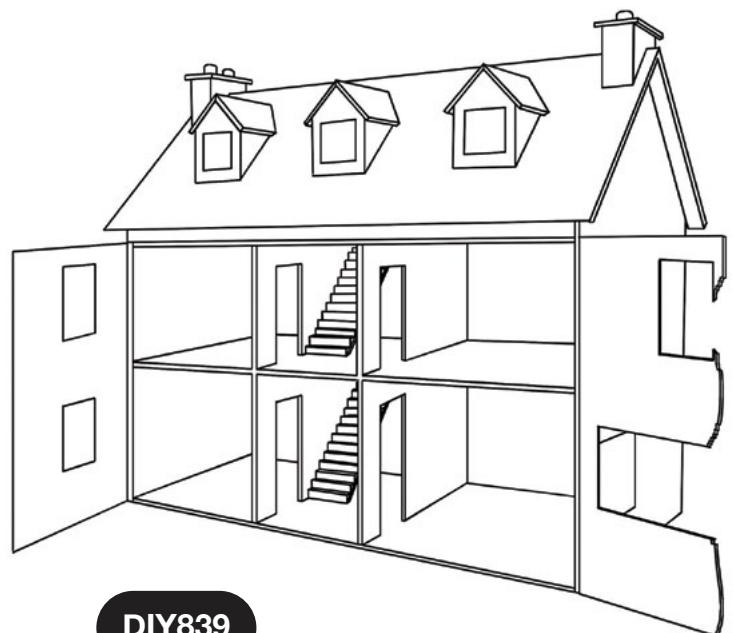


**Single Fronted Georgian Shop
(with hinged roof)**

12th
scale

This is our latest plan and was designed by Derek Rowbotham. It features a single shop with double bow windows at the front and a bow window at the side with separate accommodation to the left and above.

The finished shop measures 36" wide by 18" deep and 30" high (91cm by 46cm by 76cm).



DIY839

Jackson's Miniatures

Georgian Mansion (with hinged roof)

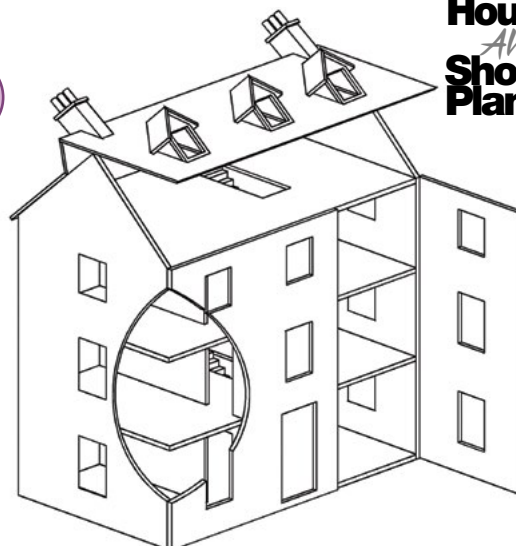
24th
scale



Our biggest 1/12th scale house plan is now available in 1/24th scale. We also make the dormer kits in 1/24th scale so you can use them if you don't fancy making them yourself!

The finished house measures 17 1/4" wide by 8" deep and 19 5/8" high (44cm by 20cm by 50cm).

DIY862



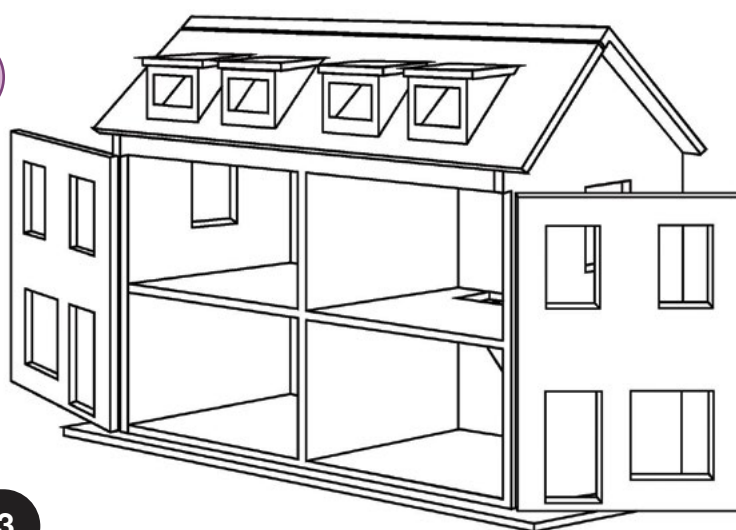
Georgian Double Fronted Shop (with hinged roof)

24th
scale

This 1/24th scale version of our shops plan brings them down to a manageable size. The plan features two shop fronts with authentic bow windows! You can choose between four different arrangements for the front doors and windows.



DIY863



The more ambitious do-it-yourselfer can customize the shops using our plan as your starting point.

The finished shops measure 16 1/4" wide by 7 1/2" deep and 15" high (41cm by 19cm by 38cm).

Georgian Single Fronted Shop (with hinged roof)

24th
scale



DIY864



This is our latest 1/24th scale plan and was designed by Derek Rowbotham. It features a single shop with double bow windows at the front and a bow window at the side with separate accommodation to the left and above.

The finished shop measures 17" wide by 9" deep and 15" high (43cm by 23cm by 38cm).

Jackson's Miniatures

Fine detail Doors & Windows

These doors and windows are made from high quality injection moulded white styrene and can be painted easily using ordinary hobby paints if you would like them to have a different appearance. (We recommend you start with a matte undercoat to stop the top coat "beading".)

Although many people say they prefer wood, there is no way to achieve the quality, detail and accuracy of our doors and windows using wood, especially in 1/24th scale. In any case, many people end up painting their wooden doors and windows. And here's a thought - are the windows in your home bare wood?



DIY131 Large Georgian Front Door

This Georgian front door is a perfect addition to our Georgian buildings range.

It measures 9 2/8" high by 7 7/16" wide (23.5cm by 18.9cm). It fits into an opening 7" high by 4" wide (17.8cm by 10.2cm).



DIY132 Small Georgian Front Door

This front door was developed for the Georgian shops, and measures 7 1/2" high by 4 5/8" wide (19cm by 11.75cm). It fits into an opening 6 3/4" high by 3 1/4" wide (17.2cm by 8.3cm).

This door is also suitable for the Georgian cottages if the large front door is too grand! But don't forget, if you choose to use this door instead you must make the opening smaller!



DIY134 Georgian 12 Pane Window (with pediment)

Designed to complement the large Georgian front door. This window has a rear insert to allow you to glaze it using acetate sheet or even real glass!

The window measures 6 3/4" high by 4 3/4" wide (14.6cm by 12cm) and fits into a hole 5" high by 3" wide (12.7cm by 7.65cm).



See our main catalogue to find our full range of everything for your Dollhouse and Miniatures hobby



DIY135 Georgian 9 Pane Window

This Georgian 9 pane window has a rear insert to allow you to glaze it using acetate sheet or even real glass!

It measures 4 1/2" high by 4 1/2" wide (11.5cm by 11.4cm). It fits into an opening 4 3/4" high by 3" wide (9.5cm by 7.6cm).



DIY136 Georgian 6 Pane Window

This Georgian 6 pane window fits into an opening of 2 1/2" high by 2 2/3" wide (6.3cm by 6.8cm).



DIY199 Georgian 24 Pane Bow Window

To our knowledge the only genuine bow window on the market! Wood can't come anywhere close to matching the detail of this window. The window can be glazed using a solid piece of acetate, but for the patient, there are locating lugs for individual panes of glass!

The window measures 5 3/8" high by 6 5/8" wide (14cm by 17cm) and fits into a hole 5" high by 6 1/4" wide (12.7cm by 15.9cm).



12th
scale

DIY200 Georgian 12 Pane Window

Similar to the pedimented window, this window can also be glazed using the rear insert.

The window measures 5 1/2" high by 4 1/2" wide (14cm by 11.5cm) and fits into a hole 5" high by 3" wide (12.7cm by 7.65cm).



12th
scale

DIY202 Large Victorian Window

Designed to complement the Victorian front door. This window has a rear insert to allow you to glaze it using acetate sheet or even real glass! You can either glaze between the window bars for complete accuracy or simply glue a larger sheet to the back of the insert.

The window measures 5 1/4" high by 3 3/8" wide (13.4cm by 8.3cm) and fits into an opening 5" high by 3" wide (12.7cm by 7.6cm).



12th
scale

DIY203 Victorian Small 4 Pane Window

Designed to complement the Victorian front door. This window has a rear insert to allow you to glaze it using acetate sheet or even real glass!

The window measures 3 7/8" high by 3 3/8" wide (10cm by 8.3cm) and fits into an opening 3 6/8" high by 3" wide (9.5cm by 7.6cm).



12th
scale

DIY205 Victorian Small Front Door

This authentic Victorian front door with panels for glazing measures 7 1/4" high by 3 3/4" wide (18.4 cm by 9.5 cm). It fits into an opening 6 7/8" high by 3 1/4" wide (17.5 cm by 8.25 cm).



12th
scale

DIY215 Victorian Large Front Door

This authentic Victorian front door with window light above measures 8 3/4" high by 4 3/8" wide (22 cm by 11 cm).

It fits into an opening 8 1/4" high by 4 1/8" wide (21 cm by 10.25 cm).

The window light has a removable insert to make glazing easy!



DIY216 Railings

These decorative Georgian or Victorian railings are ideal for doll house basement! They are 7 1/4" long and 3 1/4" high (18.4cm by 7.9cm).

DIY227 Georgian 16 Pane Window (with rounded top)

The latest addition to our range of Georgian windows also has the usual removable rear glazing insert.

The window measures 7 1/8" high by 4" wide (18cm by 10cm) and fits into a hole 6 1/4" high by 3" wide (16cm by 7.65cm).



12th
scale

Jackson's Miniatures



24th
scale

DIY449 Victorian Front Door

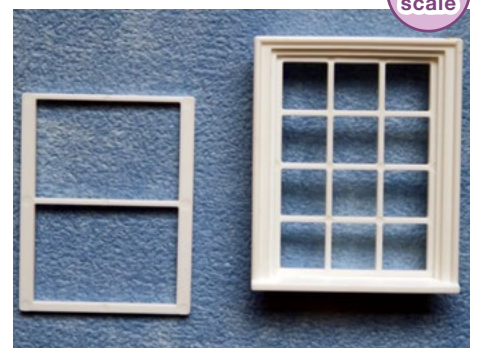
This 1/24th scale version of our small Victorian front door measures 3 9/16" high by 1 7/8" wide (90mm by 47.5mm). It fits into an opening 3 1/2" high by 1 11/16" wide (88mm by 43mm). The door itself is 3 3/16" (80mm) high by 1 7/16" (36mm) wide.



24th
scale

DIY454 Georgian Front Door

This 1/24th scale version of the small Georgian front door measures 3 3/4" high by 2 1/4" wide (9.5cm by 5.75cm). It fits into an opening 3 3/8" high by 1 5/8" wide (8.6cm by 4.13cm).



24th
scale

DIY455 Victorian 12 Pane Window

This 1/24th scale 12 pane window has a removable rear insert to allow glazing! It measures 2" high by 1 5/8" wide (50mm by 40mm). It fits into an opening 1 7/8" high by 1 1/2" wide (48mm by 38mm).

These 1/24th scale windows are similar to our 1/12th scale versions, including the removable rear insert to allow glazing!



24th
scale

DIY456 Victorian 6 Pane Window

This 1/24th scale 6 pane window fits into an opening 1 7/8" high by 1 1/2" wide (4.8cm by 3.8cm).



24th
scale

DIY457 Victorian 4 Pane Window

This 1/24th scale 4 pane window measures 2" high by 1 5/8" wide (5cm by 4cm). It fits into an opening 1 7/8" high by 1 1/2" wide (4.8cm by 3.8cm).



24th
scale

DIY458 Victorian 2 Pane Window

This window is ideal for 24th scale houses. It measures 2" high by 1" wide (5.0cm by 2.55cm). It fits into an opening 1 7/8" high by 7/8" wide (4.75cm by 2.25cm).



24th
scale

DIY459 Victorian 10 Pane Rounded Top Window

This 1/24th scale 10 pane round top window matches the rest of our 1/24th scale Victorian window range, and has a removable front glazing bar insert and a removable rear insert to allow glazing. It measures 2 5/8" high by 1 5/8" wide (67mm by 40mm). It fits into an opening 2 9/16" high by 1 1/2" wide (64mm by 38mm).



24th
scale

DIY460 Georgian 12 Pane Window

This 1/24th scale 12 pane window is similar in every respect to our 1/12th scale version, including the removable rear insert to allow glazing! It measures 2 3/4" high by 2 1/4" wide (7cm by 5.75cm). It fits into an opening 2 1/2" high by 1 1/2" wide (6.35cm by 3.8cm).



24th
scale

DIY461 Georgian 9 Pane Window

This 1/24th scale 9 pane window is similar in every respect to our 1/12th scale version, including the removable rear insert to allow glazing! It measures 2 1/8" high by 2 1/4" wide (5.4cm by 5.75cm). It fits into an opening 1 7/8" high by 1 1/2" wide (4.75cm by 3.8cm).

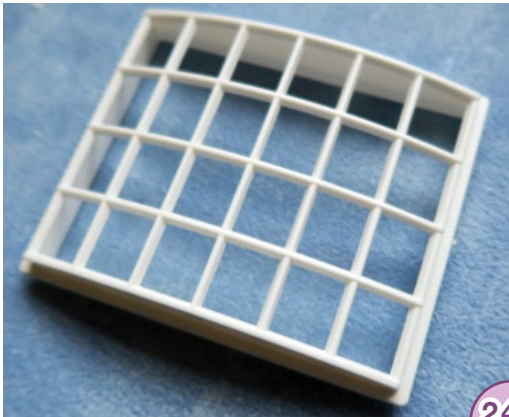


24th
scale

DIY462 Georgian 6 Pane Dormer Window

This 1/24th scale 6 pane window is similar in every respect to our 1/12th scale version, including the removable rear insert to allow glazing!

It measures 1 1/4" high by 1 3/8" wide (3.2cm by 3.5cm). It fits into an opening 1 1/4" high by 1 3/8" wide (3.2cm by 3.5cm).



24th
scale

DIY463 Georgian 24 Pane Bow Window

A genuine bow window in 1/24th scale! This one measures 2 5/8" high by 3 1/4" wide (6.7cm by 8.25cm). It fits into an opening 2 1/2" high by 3 1/8" wide (6.35cm by 7.95cm).



24th
scale

DIY464 Georgian Internal Door

This 1/24th scale internal door is similar in every respect to our 1/12th scale version, including allowing either left hand or right hand opening. It measures 3 7/16" high by 1 9/16" wide (8.75cm by 4.00cm). It fits into an opening 3 3/8" high by 1 3/8" wide (8.6cm by 3.5cm).



12th
scale

DIY816 Plastic Victorian Front Door

This 1/12th scale door is to fit an opening of height 6 3/4" by a width of 3 3/16" (17.2cm by 8.1cm).



24th
scale

DIY865 Georgian Pediment

This 1/24th scale pediment complements our 1/24th Georgian front door and our 12 pane and 9 pane windows. Use it to decorate the exterior of your Georgian mansion! It measures 5/8" high by 2 3/8" wide (1.7cm by 6cm).

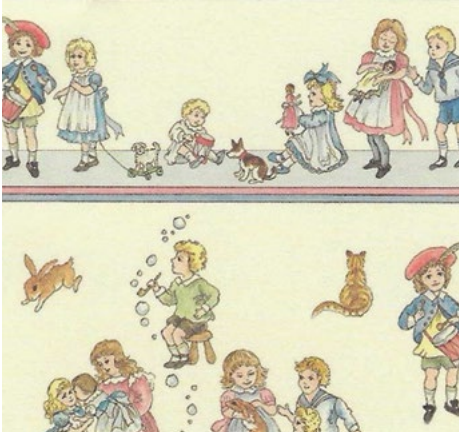
DIY888 135mm Small Quoins

5 3/8" high by 5/8" wide (13.6cm by 1.6cm).

These quoins are perfect for adding to any external corner to create an authentic look.



Jackson's Miniatures



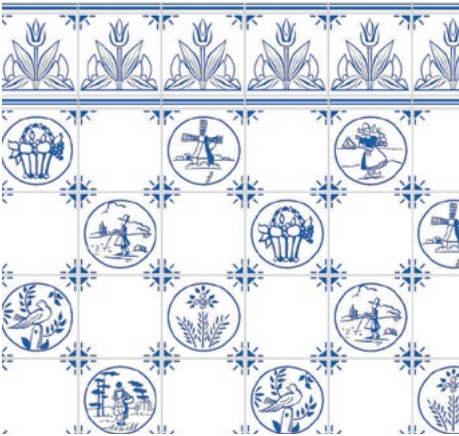
DIY139



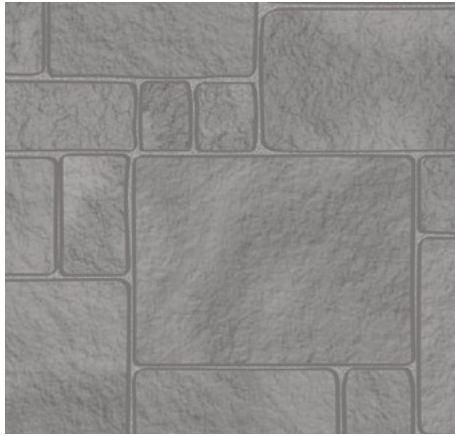
DIY139A



DIY139 and DIY139A are A3 sheets with a top border and repeating pattern. Full sheet shown above.



DIY219 Dutch Tile Blue



DIY220 Worn Flagstones



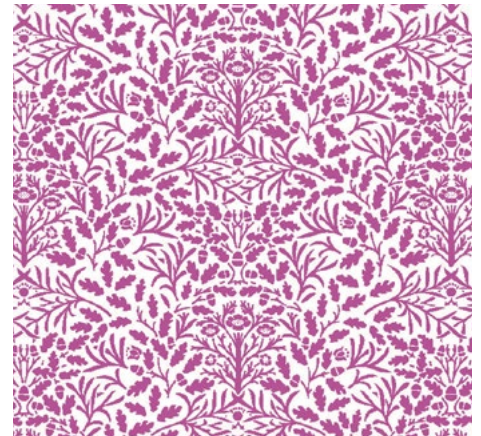
DIY221A Fine Quality Acorns Green on White



DIY221B Fine Quality Acorns Pink on White



DIY221C Fine Quality Acorns Blue on White



DIY221D Fine Quality Acorns Purple on White



DIY221E Fine Quality Acorns Brown on Cream



DIY221F Fine Quality Acorns Green on Cream



A3
size



Wallpapers

Paper. A3 size, matt finish, unless otherwise stated.



DIY222A Fine Quality Acorns Border Green on White, 25mm x 456mm



DIY222B Fine Quality Acorns Border Pink on White, 25mm x 456mm



DIY222C Fine Quality Acorns Border Blue on White, 25mm x 456mm



DIY222D Fine Quality Acorns Border Purple on White



DIY222E Fine Quality Acorns Border Brown on Cream



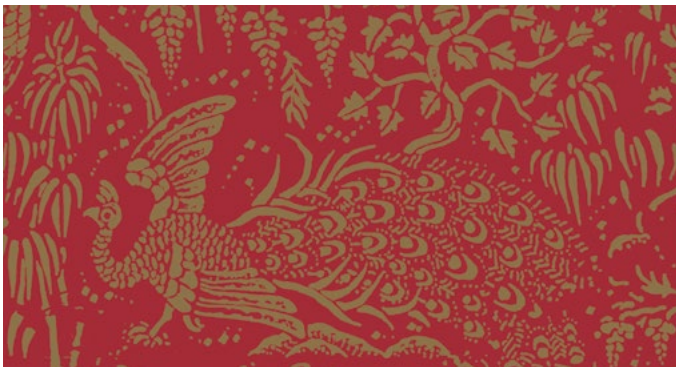
DIY222F Fine Quality Acorns Border Green on Cream, 25mm x 456mm



Fine Quality Acorns Borders DIY222A, B, C and F are 25 x 456mm, each sheet includes 3 strips as shown above



Fine Quality Acorns Borders DIY222D and E are A3, each sheet includes 10 strips as shown above



DIY223A Fine Quality Peacocks Gold on Red



DIY224 Regency Gold



DIY225A Fine Quality Tulip Arabesque Turquoise

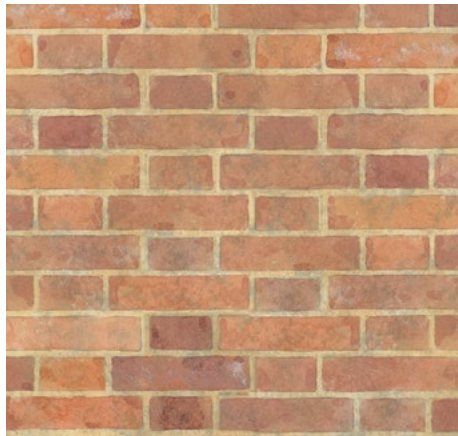


DIY225B Fine Quality Tulip Arabesque Ivory



DIY225C Fine Quality Tulip Arabesque Sea Green

Jackson's Miniatures



DIY263 Old Red Brick Paper



DIY269 Quality Slate Paper



DIY270 Bo Peep Nursery



DIY277 Fruit & Flowers



DIY277 is an A3 sheet with detailed panelling. Full sheet shown above.



DIY278B Rococo Silk Blue



DIY278CO Rococo Silk Corn



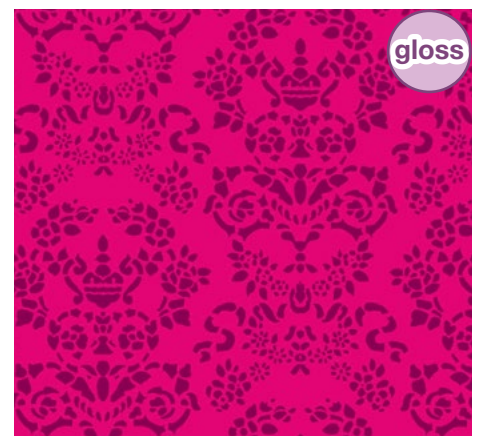
DIY278GR Rococo Silk Green



DIY278P Rococo Silk Pink



DIY279RG Renaissance Red/Gold



DIY279RR Renaissance Red/Red



CHECK IF GLOSS



DIY279WB Renaissance White/Blue



DIY280RG Victorian Red/Gold



DIY280RR Victorian Red/Red



DIY300 Fairies



DIY301 Meadow Flowers



DIY302 Music Room



DIY303 Tulip Arabesque Pink/Cream



DIY302 is an A3 sheet with detail. Full sheet shown above.



DIY305 Colonial Clippers

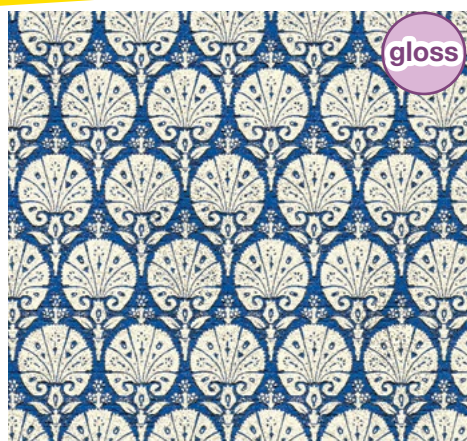


DIY306 Colonial Homestead



DIY307 Colonial Gardens

Jackson's Miniatures



DIY319B Ottoman Blue



DIY319G Ottoman Green



DIY319R Ottoman Red



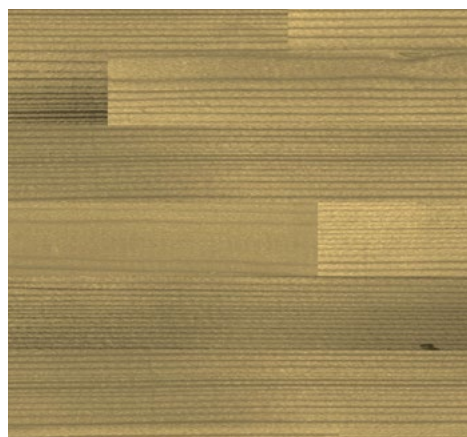
DIY333 Pink Fairy



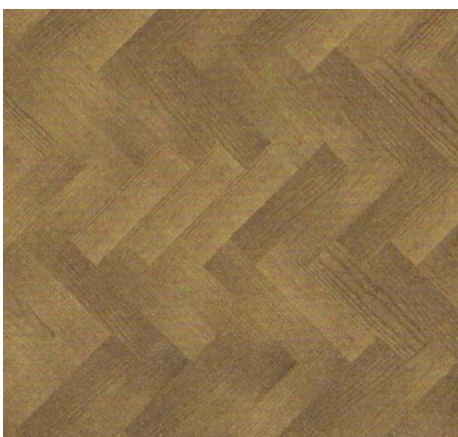
DIY334 Art Deco Odeon



DIY335 Art Deco Butterfly



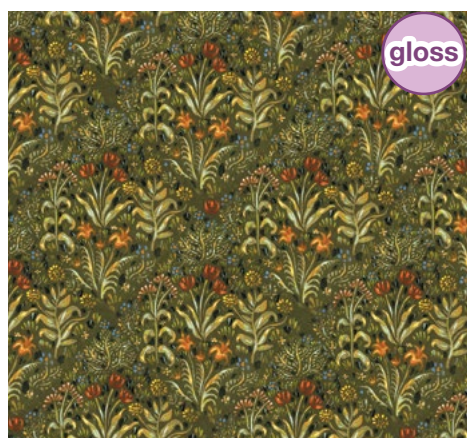
DIY338 Wood Floorboard



DIY339 Herringbone Parquet Floor



DIY340 Square Parquet Floor



DIY341 Field of Flowers



DIY342 Japanese Iris



DIY229 &
DIY035

Please remember to
use Streets Ahead
Wallpaper Paste!



24th scale

DIY437 Fruit and Flowers
220 x 152mm



DIY277 is a 220 x 152mm sheet with detailed panelling. Full sheet shown above.



24th scale

DIY438 Fairies
220 x 152mm



24th scale

DIY439 Children Cream
220 x 152mm

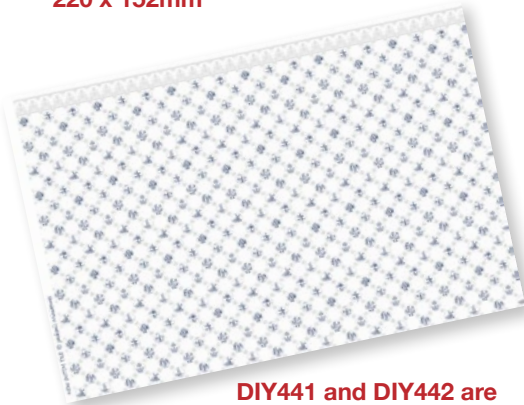


24th scale

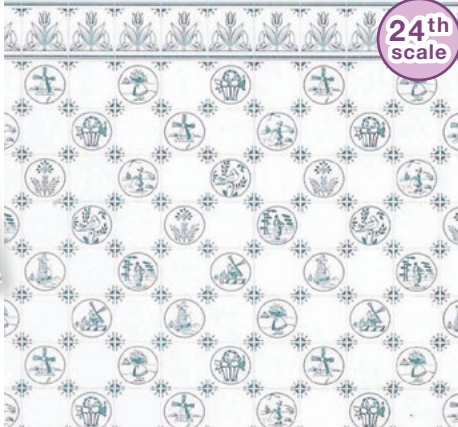
DIY440 Children White
220 x 152mm



DIY440 is a 220 x 152mm sheet with top border included. Full sheet shown above.

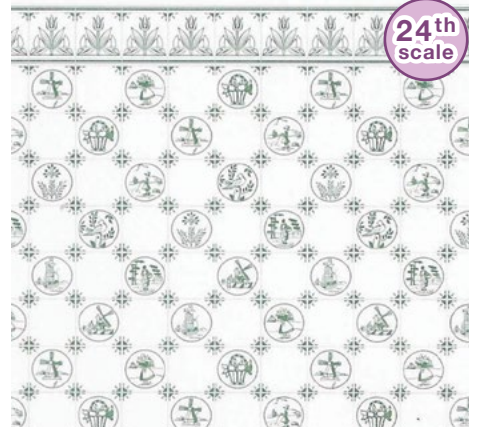


DIY441 and DIY442 are 220 x 152mm sheets with top border included. Full sheet shown above.



24th scale

DIY441 Dutch Tile Blue
220 x 152mm



24th scale

DIY442 Dutch Tile Green
220 x 152mm



24th scale

DIY443 Victorian Floor Tiles
227 x 163mm



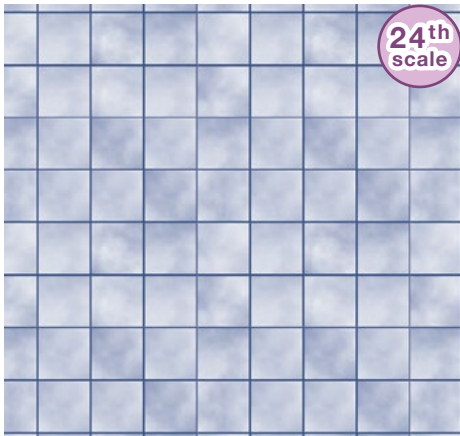
DIY443 is a 227 x 163mm sheet with full border included. Full sheet shown above.



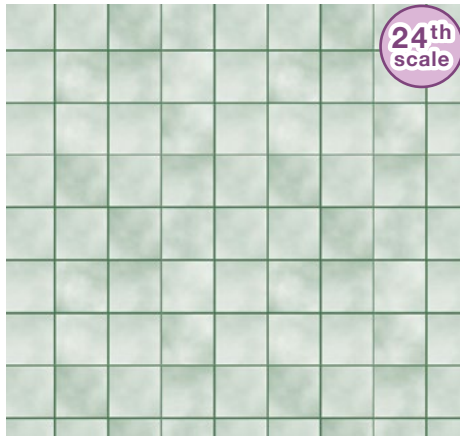
24th scale

DIY444 Worn Flagstones

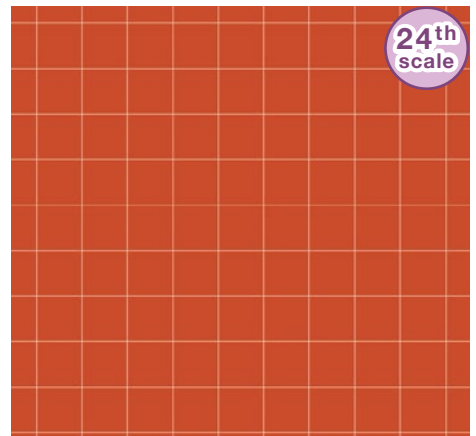
Jackson's Miniatures



DIY445 Marble Tiles Blue
220 x 152mm



DIY446 Marble Tiles Green
220 x 152mm



DIY447 Quarry Tiles
220 x 152mm



DIY448 Red Brick
220 x 152mm



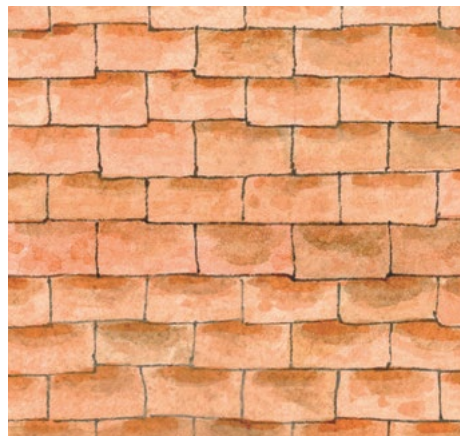
DIY471 Wood Floorboard
220 x 152mm



DIY472 Herringbone Parquet Floor
220 x 152mm



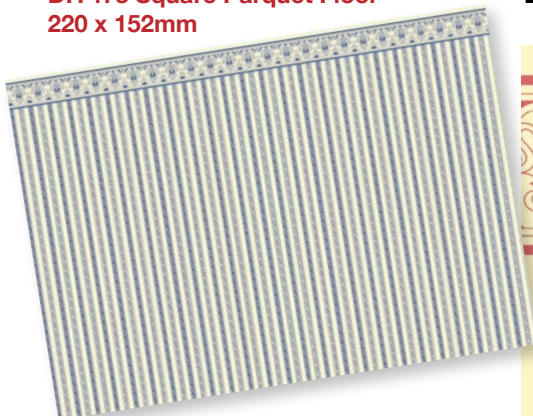
DIY473 Square Parquet Floor
220 x 152mm



DIY670 Georgian Roof Tiles



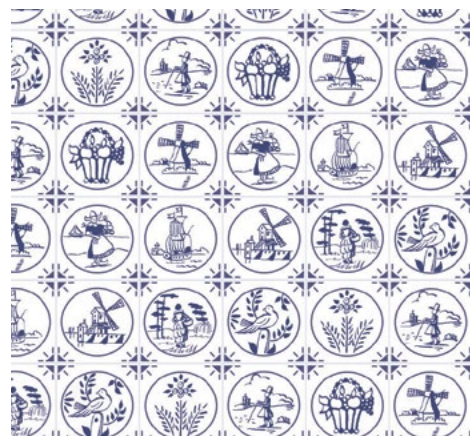
DIY805 Regency Stripe Blue



DIY805, DIY806, DIY840 and DIY841 are A3 sheets with a top border and repeating pattern. Full sheet shown above.



DIY806 Regency Stripe Burgundy



DIY807 Compact Dutch Tile



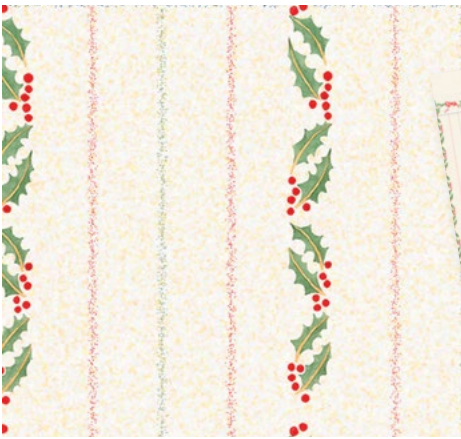
DIY808 Country Springtime



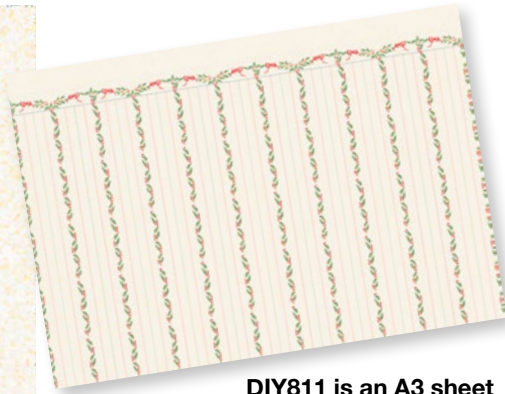
DIY809 Birds and Berries Cream



DIY810 Christmas Holly

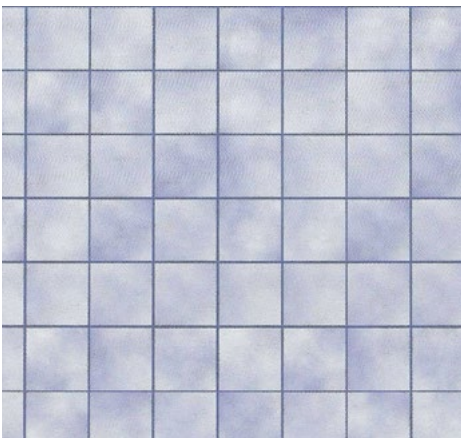
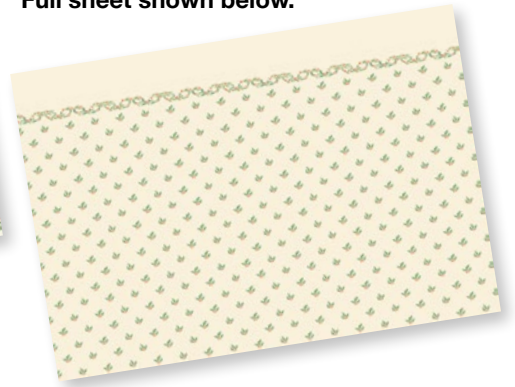


DIY811 Christmas Stripes



DIY811 is an A3 sheet with a top border and repeating pattern. Full sheet shown above.

DIY810 is an A3 sheet with a top border and repeating pattern. Full sheet shown below.



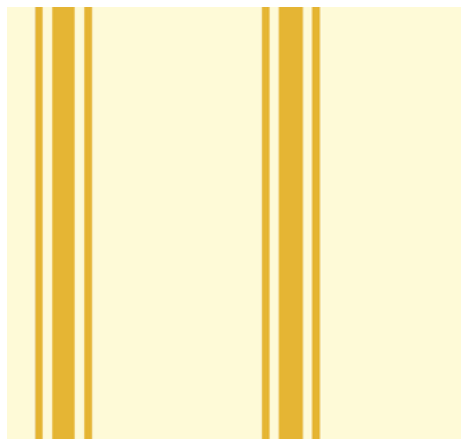
DIY823 Grey Marble Tile



DIY840 Regency Stripe Green



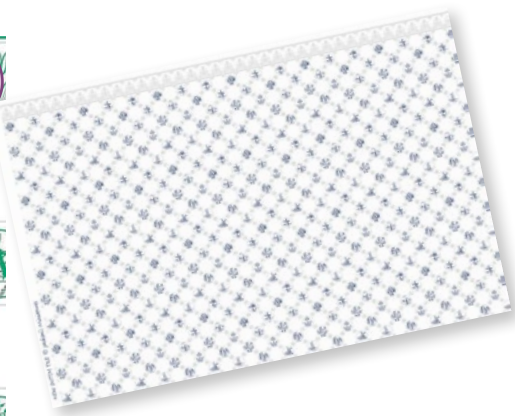
DIY841 Regency Stripe Plum



DIY842 Urn Matching Gold Stripe

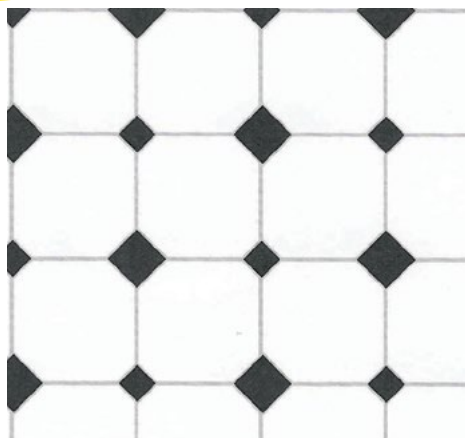


DIY843 Dutch Tile Green on White



DIY807 and DIY843 are A3 sheets with a top border and repeating pattern. Full sheet shown above

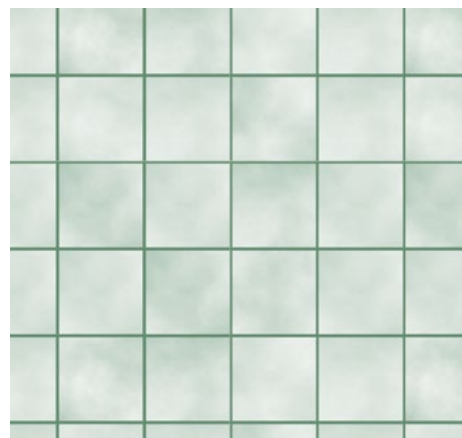
Jackson's Miniatures



DIY844 Diamond Tiles Black & White



DIY845 Sandstone Flagstones



DIY846 Green Marble Tile



DIY847 Country Springtime Lemon



DIY848 Country Springtime Green



DIY849 At the Seaside



DIY850 Family Pets



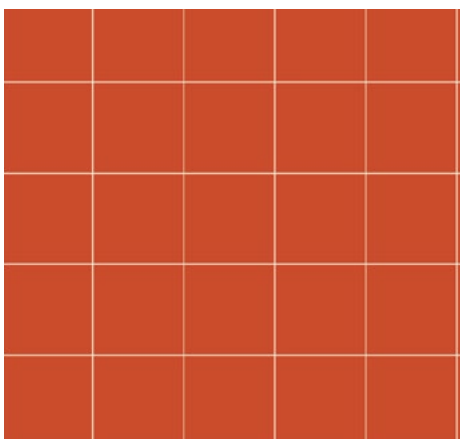
DIY851 April in Paris



DIY852 Rose Trellis



DIY853 Reverse Urn



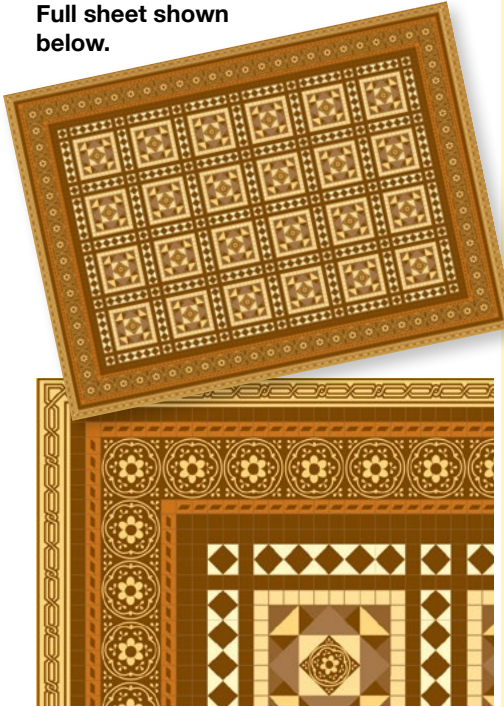
DIY854 Quarry Tiles





DIY855 Children Border Cream
440 x 33mm

DIY856 includes a full border.
Full sheet shown below.



DIY856 Victorian Floor Tiles
410 x 300mm

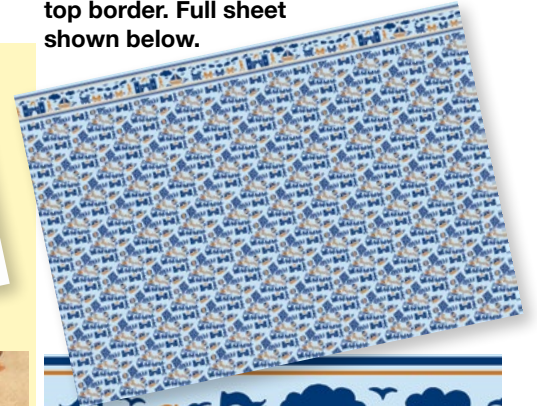


DIY857 Chinoiserie Panel.
Shown right.



DIY857 Chinoiserie Panels

DIY858 includes a top border.
Full sheet shown below.



DIY858 Toyland Adventure

DIY859 is an A3 sheet including a border.
Full sheet shown below.



DIY859 Playful Kittens



DIY860 Tudor Frieze
2 strips on one sheet, each strip
420 x 110mm



DIY860 Tudor Frieze

gloss



DIY861 Birds & Berries Green

Jackson's Miniatures



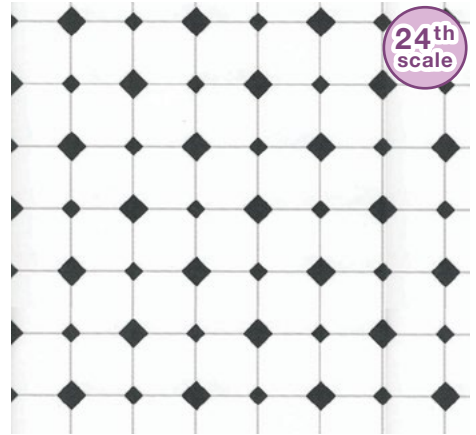
24th
scale

DIY867 Regency Blue Stripe



24th
scale

DIY868 Regency Burgundy Stripe
220 x 152mm



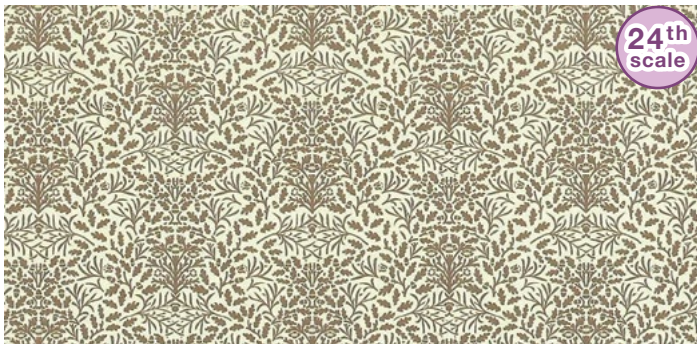
24th
scale

DIY869 Diamond Tiles Flooring
220 x 152mm

DIY867 and DIY868 are A3 sheets with a top border and repeating pattern. Full sheet shown left.



Fine Quality Acorns Borders are 13 x 230mm, each sheet includes 3 strips as shown above.



24th
scale

DIY870 Acorns Brown on Cream 220 x 152mm



24th
scale

DIY872 Green on Cream 220 x 152mm



24th
scale

DIY871 Acorns Border Brown on Cream x 3, 13 x 230mm



24th
scale

DIY873 Acorns Border Green on Cream x 3, 13 x 230mm



24th
scale

DIY874 Acorns Blue on White 152 x 220mm



24th
scale

DIY876 Acorns Pink on White 152 x 220mm



24th
scale

DIY875 Acorns Border Blue on White x 3, 13 x 230mm



24th
scale

DIY877 Acorns Border Pink on White x 3, 13 x 230mm



24th
scale

DIY878 Children Border on White
19 x 420mm



24th
scale

DIY879 Children Border on Cream
19 x 420mm

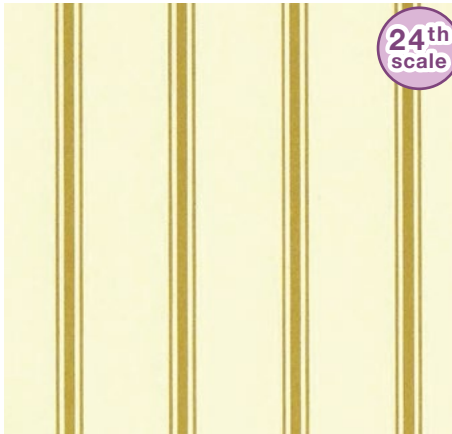


DIY882, 117 x 51mm.
Shown above.



24th
scale

DIY880 Urn Gold
220 x 152mm



24th
scale

DIY881 Urn Gold Stripe
220 x 152mm



24th
scale

DIY882 Chinoiserie Panels
117 x 51mm



DIY883 Plain Background Paper Salmon
226 x 160mm



24th
scale

DIY884 Old Grey Slate Roof
220 x 152mm



24th
scale

DIY885 Birds & Berries Green
220 x 152mm



24th
scale

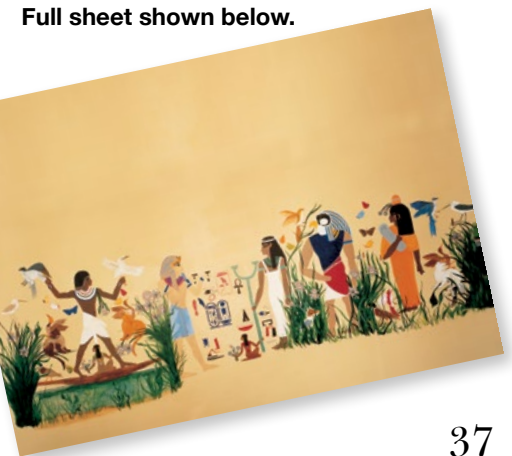
DIY886 Birds & Berries Cream
220 x 152



gloss

DIY887 Egyptienne

DIY887 is an A3 sheet.
Full sheet shown below.



Jackson's Miniatures

NEW

Embossed Papers **NEW**

Our embossed papers bring another dimension to traditional dollhouse decorating.



DIY889 Blue Dutch Tile Embossed



DIY890 Green Dutch Tile Embossed



DIY891 Compact Dutch Tile Embossed



DIY892 Grey Marble Tile Embossed



DIY893 Green Marble Tile Embossed



DIY894 Quarry Tiles Embossed



DIY895 Worn Flagstones Embossed



DIY896 Sandstone Flagstones Embossed



DIY897 Grey Slate Embossed



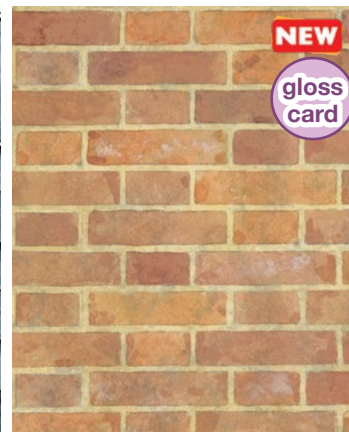
DIY898 Old Slate Embossed



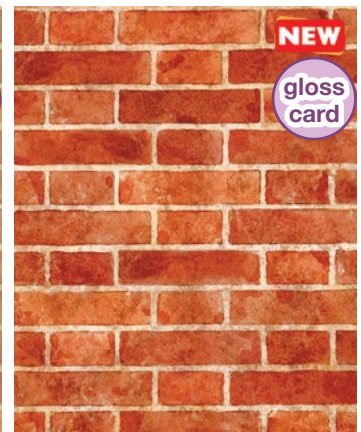
DIY899 Georgian Roof Tiles Embossed



DIY900 Grey Georgian Roof Tiles Embossed



DIY901 Old Red Brick Embossed



DIY902 Red Brick Embossed

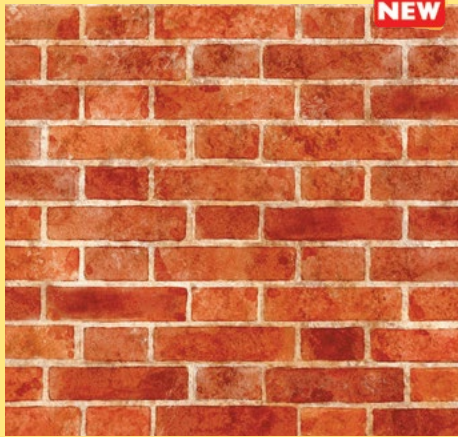


NEW Wallpaper Colourways



NEW

DIY903 Grey Georgian Roof Tiles



NEW

DIY904 Red Brick



NEW

DIY905 Old Slate

COMING SOON



Simple Embossed Papers

NEW

This range of updated classic designs and brand new designs are now all available as embossed A3 sheets.



UPDATED

DIY138 Embossed Ceiling Paper



UPDATED

DIY226 Embossed Anaglypta



NEW

DIY913A Embossed Artex



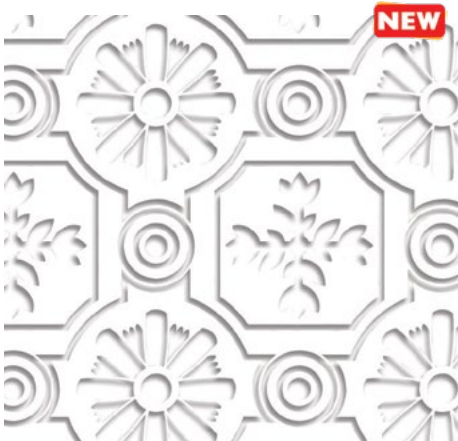
NEW

DIY913B Embossed Oyster Artex



NEW

DIY914A Embossed Anaglypta Panelling



NEW

DIY914B Embossed Anaglypta Botanical



NEW

DIY914C Embossed Anaglypta Flowers



Streets Ahead Dollhouse

Major International Supplier of Dollhouses and Miniatures



Catalogue © Streets Ahead 2026

PLEASE NOTE: Items may vary from the catalogue illustrations.
WARNING: These are collectors items and unless indicated not CE marked and should not be sold as toys.